

Download and Import Media Profiles Into Rolandprintstudio™

This document shows you how to easily download media profiles from the Roland Profile Center website and upload the media profiles into your version of the Rolandprintstudio™ RIP Software.



Welcome to the Roland Profile Center. Conveniently located at www.rolandprofilecenter.com, you will find the latest media profiles for Roland printers and popular media types. Be sure to visit the website frequently as it is regularly updated with new media profiles. This user guide will show you how easy it is to download media profiles for the Roland Profile Center and install them in your Rolandprintstudio™ software.

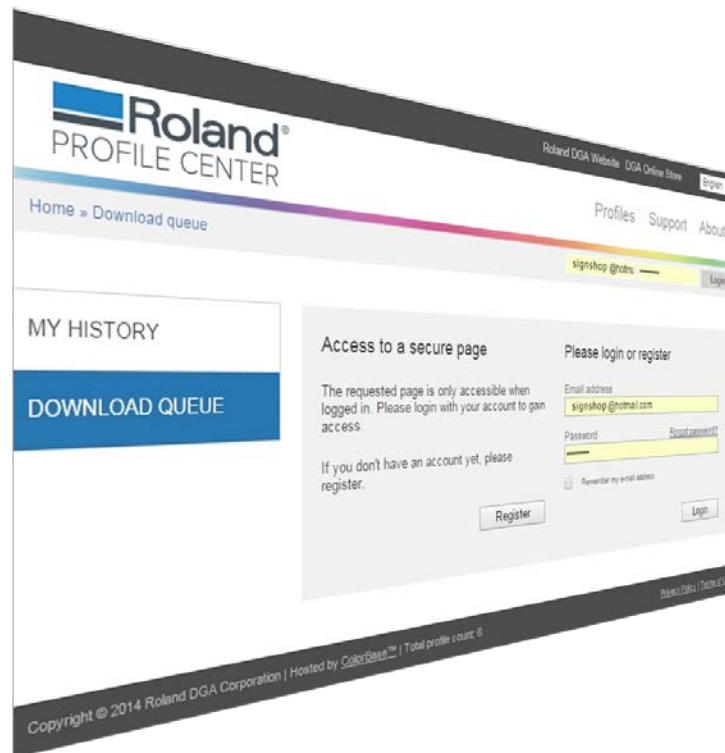




Table of Contents

Table of Contents	3
Welcome to the Roland Profile Center	3
Change Languages	4
How to Register	4
How to Download Profiles	7
How to Import Profiles	10
Support	12

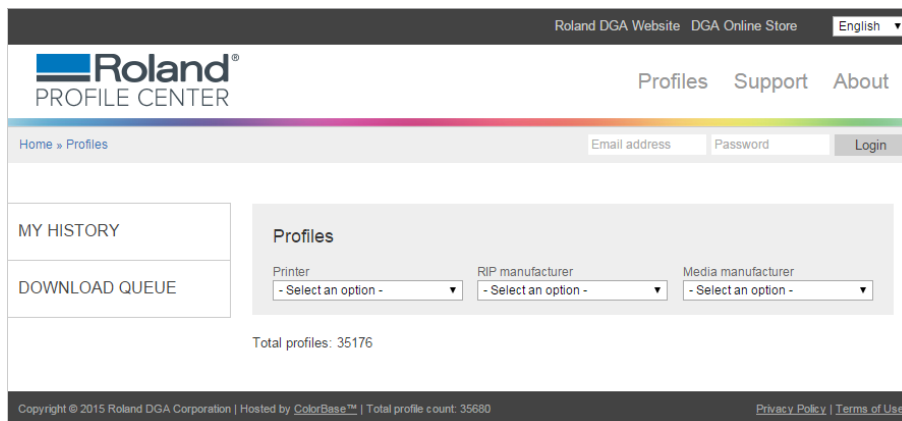
Welcome to the Roland Profile Center

www.rolandprofilecenter.com

The Roland Profile Center is a one-stop site for obtaining media profiles for your Roland printer, enabling you to produce the highest quality output from your Roland inkjet.

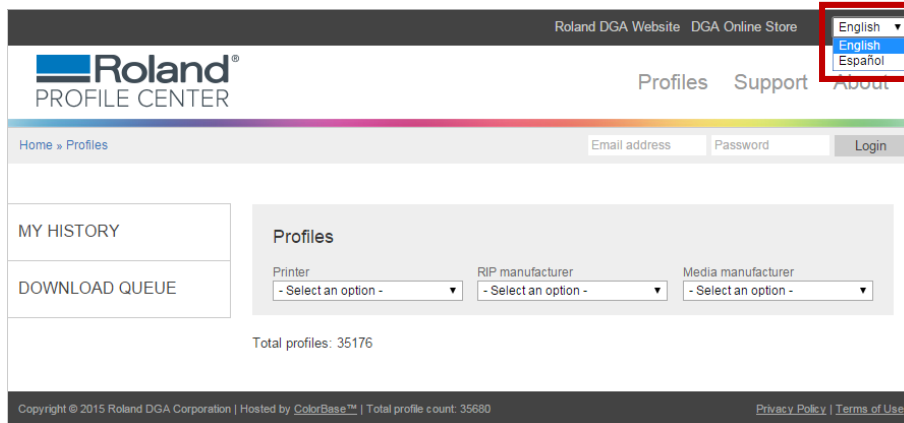
Simply download a profile for the selected media, import it into your RIP and start printing. It's that easy.

Please be informed that many of the media profiles posted within the library are supplied by media manufacturers other than Roland. With this in mind, and because Roland can only test, endorse and guarantee its own profiles, users are encouraged to test any profiles selected from the library before printing to ensure satisfaction.



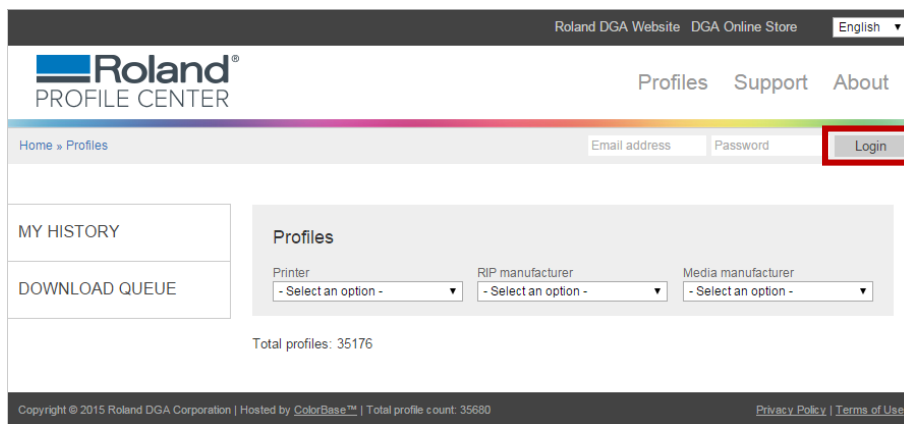
Change Languages

Select your preferred language using the language dropdown menu located in the upper, right side of the website.

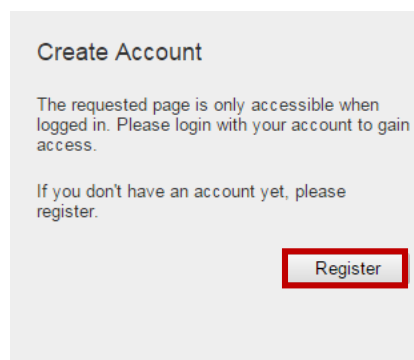


How to Register

1. Anyone can search for profiles but once you are ready to download your selection, you will be prompted to log in or create an account. To create an account click on the “Login” button.



2. By creating an account you will get easy access to media profiles and can keep track of your downloads. Click “Register” to create your account.



3. Fill out the registration form and click "Save".

MY HISTORY

DOWNLOAD QUEUE

Create Account

Please fill in the following information. After you select "Save" below, you will receive an email with a confirmation link that you must click on to finalize your registration. If you do not receive the confirmation email, please email us at support@rolandprofilecenter.com.

Company First Name

Address Last Name

Zip Code/Postal Code Email address

City Password

State/Province Re-type password

Country
United States

Language
English

I want to receive updates about downloaded color profiles

I want to receive Roland Profile Center info updates

I agree to the Terms of Use

Save

4. After you fill out the online form, an activation email will be sent to the email address you registered your account with. Once you confirm your registration, your account will be activated. You will then be able to log in to view your download queue.

Roland DGA Website DGA Online Store English

Roland PROFILE CENTER

Profiles Support About

Home » Create Account Email address Password Login

Create Account

Thank you for creating an account for the Roland Profile Center. An activation email has been sent to the email address listed in your account. Simply click the link in the email to activate your account.

Copyright © 2015 Roland DGA Corporation | Hosted by ColorBase™ | Total profile count: 35680 Privacy Policy Terms of Use



5. Open the email received from the Roland Profile Center. Click the link in the to activate your Roland Profile Center account.



Roland Profile Center
Roland Profile Center: Activate Your Roland Profile Center Account

Thank you for registering for the Roland Profile Center. To activate your account, please click the link below.

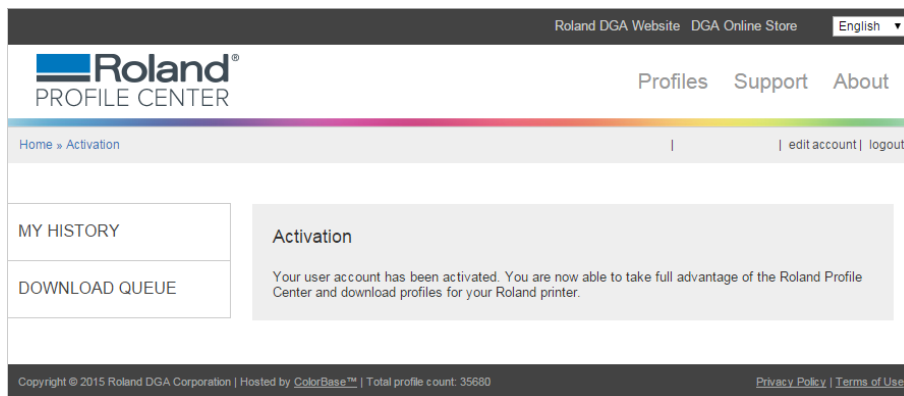
http://rolandprofilecenter.com/dga/activate_email.php?activate=dh@der.era.com&hkey=1301975&check=65f1f4a80b4738c4f819753d152e24e3&id=4482

Our goal is to make it as easy as possible to find media profiles for your Roland printer, so you can produce the highest quality output for your customers.

In the event you did not wish to create an account you can disregard this email.

Sincerely,
Roland Profile Center Support

6. Once you confirm your registration, your account will be activated. You will then be able to log in to download profiles.



How to Download Profiles

1. We've made searching for profiles really easy by designing pre-set search tools. You can narrow your search results by selecting your Printer, RIP, Media Manufacturer, Ink Type, Media Name and Ink Setup.

The screenshot shows the Roland Profile Center interface. At the top, there's a navigation bar with 'Roland PROFILE CENTER', 'Profiles', 'Support', and 'About'. Below this is a search bar with 'Email address' and 'Password' fields, and a 'Login' button. The main content area is titled 'Profiles' and contains several dropdown menus for filtering: 'Printer' (SOLJET Pro 4 XR-640), 'RIP manufacturer' (Roland), 'Media manufacturer' (Roland DGA), 'Ink type' (Eco-Sol MAX 2), 'RIP version' (Rolandprintstudio 1.x), 'Media name' (- Select an option -), and 'Ink setup' (CMYKcmk). A 'Reset form' button is located below these filters. Below the filters, it says 'Total profiles: 7' and 'Download Queue (1)'. A table lists the profiles with columns for 'Profile', 'Request the profiles you need', and 'Add to queue'. The table contains 7 rows of profile information. At the bottom of the table, it says 'Total profiles: 7' and 'Download Queue (1)'. The footer contains copyright information: 'Copyright © 2015 Roland DGA Corporation | Hosted by ColorBase™ | Total profile count: 35680' and links for 'Privacy Policy' and 'Terms of Use'.

Profiles

Printer: SOLJET Pro 4 XR-640
 RIP manufacturer: Roland
 Media manufacturer: Roland DGA
 Ink type: Eco-Sol MAX 2
 RIP version: Rolandprintstudio 1.x
 Media name: - Select an option -
 Ink setup: CMYKcmk

Reset form

Total profiles: 7 [Download Queue \(1\)](#)

Profile	Request the profiles you need	
Roland DGA GBF: Glossy Backlit Film Eco-Sol MAX 2 - CMYKcmk - 720x1440 - 12 pass - Bi - Frontlit		Add to queue
Roland DGA GCVP: Glossy Calendered Vinyl Eco-Sol MAX 2 - CMYKcmk - 540x720 - 6 pass - Bi - Frontlit		Add to queue
Roland DGA GPP2: Glossy Photobase Paper Eco-Sol MAX 2 - CMYKcmk - 720x1440 - 12 pass - Bi - Frontlit		Add to queue
Roland DGA HTM3: HeatSoft® Plus Eco-Sol MAX 2 - CMYKcmk - 720x720 - 6 pass - Bi - Frontlit		Add to queue
Roland DGA LBV2: Light-Weight Banner Vinyl Eco-Sol MAX 2 - CMYKcmk - 540x720 - 5 pass - Bi - Frontlit		Add to queue
Roland DGA MCVP: Matte Calendered Vinyl Eco-Sol MAX 2 - CMYKcmk - 540x720 - 6 pass - Bi - Frontlit		Add to queue
Roland DGA SGP3: Solvent Glossy Paper Eco-Sol MAX 2 - CMYKcmk - 720x720 - 6 pass - Bi - Frontlit		Add to queue

Total profiles: 7 [Download Queue \(1\)](#)

Copyright © 2015 Roland DGA Corporation | Hosted by ColorBase™ | Total profile count: 35680 [Privacy Policy](#) | [Terms of Use](#)



2. Add the profile to your download queue by selecting the button "Add To Queue" next to the profile you want to download.

Total profiles: 4 [Download Queue](#)

Profile		Request the profiles you need
Roland DGA GCVP: Glossy Calendered Vinyl Eco-Sol MAX 2 - CMYKcm+White+Metallic - 720x720 - 6 pass - Bi - Frontlit		Add to queue
Roland DGA GCVP: Glossy Calendered Vinyl Eco-Sol MAX 2 - CMYKcm+White+Metallic - 720x720 - 4 pass - Bi - Frontlit		Add to queue
Roland DGA GCVP: Glossy Calendered Vinyl Eco-Sol MAX 2 - CMYKcm+White+Metallic - 720x720 - 6 pass - Bi - Frontlit		Add to queue
Roland DGA GCVP: Glossy Calendered Vinyl Eco-Sol MAX 2 - CMYKcm+White+Metallic - 720x720 - 6 pass - Uni - Frontlit		Add to queue

Total profiles: 4 [Download Queue](#)

3. When you are ready to download your selection, click the "Download Queue" link.

Total profiles: 4 [Download Queue \(3\)](#)

Profile		Request the profiles you need
Roland DGA GCVP: Glossy Calendered Vinyl Eco-Sol MAX 2 - CMYKcm+White+Metallic - 720x720 - 6 pass - Bi - Frontlit		Remove from Queue
Roland DGA GCVP: Glossy Calendered Vinyl Eco-Sol MAX 2 - CMYKcm+White+Metallic - 720x720 - 4 pass - Bi - Frontlit		Remove from Queue
Roland DGA GCVP: Glossy Calendered Vinyl Eco-Sol MAX 2 - CMYKcm+White+Metallic - 720x720 - 6 pass - Bi - Frontlit		Remove from Queue
Roland DGA GCVP: Glossy Calendered Vinyl Eco-Sol MAX 2 - CMYKcm+White+Metallic - 720x720 - 6 pass - Uni - Frontlit		Add to queue

Total profiles: 4 [Download Queue \(3\)](#)



- Next confirm your selection and remove any unwanted profiles. Then click the “Download Queue” button. You will be prompted to log in or to create an account.

Download Queue

Below is the list of profiles you've selected to download. Once you select the download button a zip file will be prepared. Please note, the more profiles you download, the larger the zip file. In some cases it may take several minutes to prepare the zip file and also to download the zip file. Once a profile has been downloaded, it will be listed in your download history.

Total profiles: 3

Profile		
Roland SOLJET Pro 4 XR-640 Roland Rolandprintstudio 1.x Roland DGA GCVP: Glossy Calendered Vinyl Eco-Sol MAX 2 - CMYKcm+White+Metallic - 720x720 - 6 pass - Bi - Frontlit		<input type="button" value="Remove from Queue"/>
Roland SOLJET Pro 4 XR-640 Roland Rolandprintstudio 1.x Roland DGA GCVP: Glossy Calendered Vinyl Eco-Sol MAX 2 - CMYKcm+White+Metallic - 720x720 - 4 pass - Bi - Frontlit		<input type="button" value="Remove from Queue"/>
Roland SOLJET Pro 4 XR-640 Roland Rolandprintstudio 1.x Roland DGA GCVP: Glossy Calendered Vinyl Eco-Sol MAX 2 - CMYKcm+White+Metallic - 720x720 - 6 pass - Bi - Frontlit		<input type="button" value="Remove from Queue"/>

Total profiles: 3

Download Close

Roland SOLJET Pro 4 XR-640

Please wait while our server is preparing your profiles for download.

Roland SOLJET Pro 4 XR-640

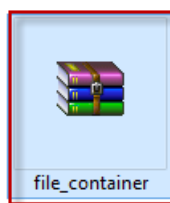
- Depending on the number of profiles you selected, it may take from a few seconds to several minutes to prepare the file. When completed, simply click on the link “Files are ready, click here to start download”.

Download Close

Roland SOLJET Pro 4 XR-640

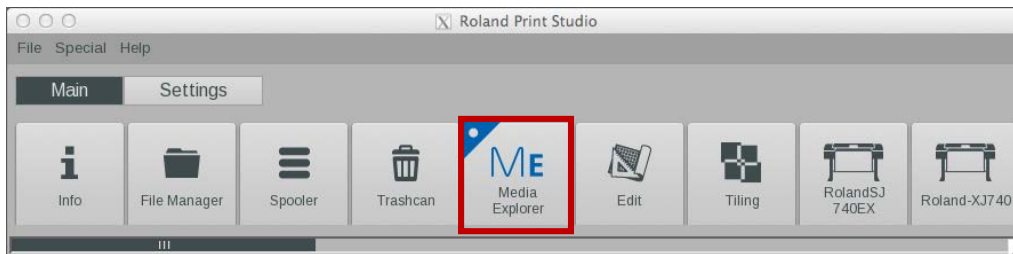
[Files are ready, click here to start the download](#)
Download size: 28.32 MB

- The zip file will download to your computer. When the download is complete, open the file in your downloads folder and save it to your computer. Extract the profiles from the downloaded file. The profiles once extracted will display the file name extension ".calpatch".

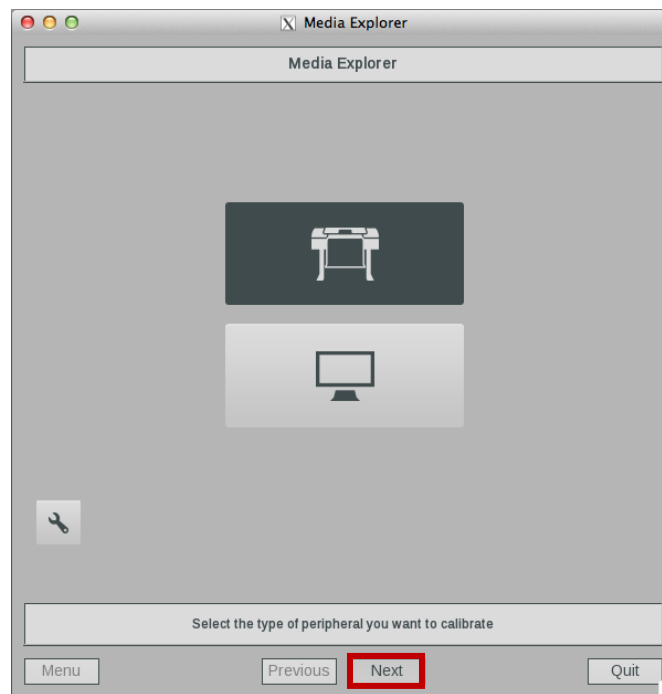


How to Import Profiles

1. Before you begin, make sure that the zip file downloaded from the Roland Profile Center is unzipped and the individual .calpatch files are saved to your computer. Important: Do not unzip each .calpatch file. They will not load properly if unzipped.
2. Launch **Rolandprintstudio** RIP software.
3. Open the Media Explorer module by clicking on the “ME” icon.



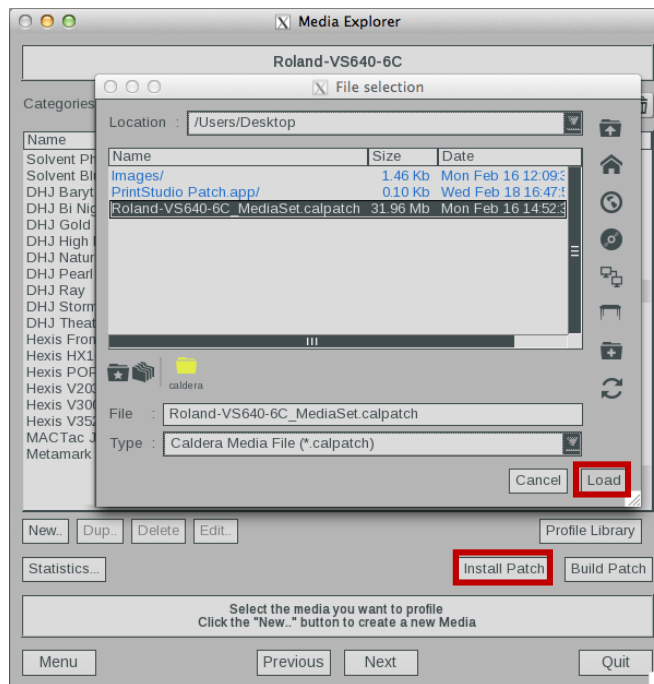
4. Select the printer icon and click "Next".



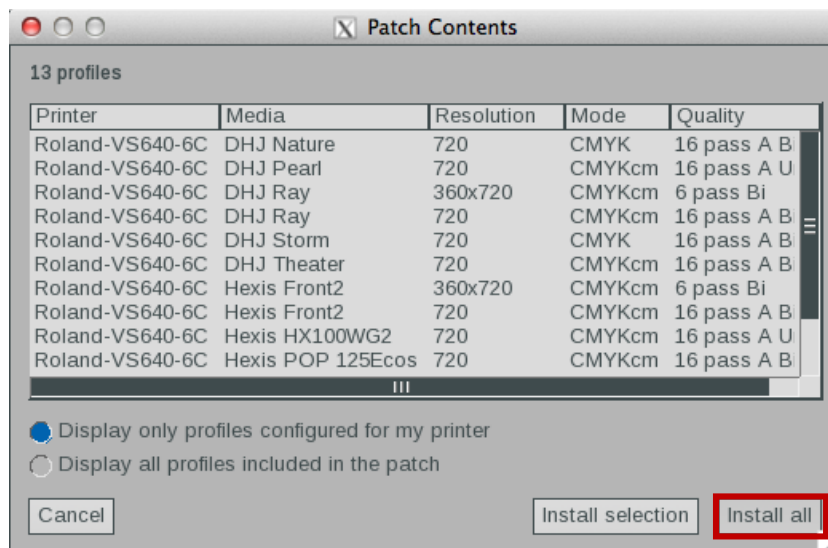
5. Select the printer that matches the profiles being imported. Click “Next”.
6. Click "Install Patch".



- The file selection pop-up will open. Browse to the file you are importing and click "Load".



- A new pop-up opens displaying the list of the profiles contained in the patch. Select the profile(s) you want to install then click on "Install selection" or click directly on "Install all".



- You will be prompted for a password, enter "roland".
- You will receive a message stating the patch was successfully created. Click "OK". Repeat steps 6 through 9 to install any remaining profiles on your computer.

Support

You will find additional support resources on the support tab on the Roland Profile Center website.

The screenshot shows the Roland Profile Center website interface. At the top, there is a navigation bar with the Roland logo and 'PROFILE CENTER' on the left, and 'Profiles', 'Support', and 'About' on the right. The 'Support' tab is highlighted with a red box. Below the navigation bar, there is a breadcrumb trail 'Home > Support' and links for 'edit account' and 'logout'. On the left side, there are two menu items: 'MY HISTORY' and 'DOWNLOAD QUEUE'. The main content area is titled 'Support' and contains several sections of text providing support resources, including links to email support, FAQs about profiles, and information about importing profiles into VersaWorks.

Roland DGA Website DGA Online Store English

Roland®
PROFILE CENTER

Profiles Support About

Home > Support | edit account | logout

MY HISTORY

DOWNLOAD QUEUE

Support

Need help? Below are a few of our support resources. If you can't find what you're looking for, please e-mail us at support@rolandprofilecenter.com.

What are profiles?
Profiles are designed to optimize the performance of the printer and media combination. Profiles tell your printer to lay down the right amount of ink, at the right speed to help ensure the best possible print quality. Profiles should be considered a starting point for your preferred quality level of output. To learn more about creating your own custom profiles, please visit our [Roland Academy Webinar Archive](#). We have several webinars that teach you how to get the most out of a profile as well as, what tools are needed to create a custom profile.

How do I import profiles into VersaWorks®?
Click [here](#) to watch a video on how to import profiles from the Roland Profile Center into VersaWorks. Click [here](#) to read a PDF on how to import profiles from the Roland Profile Center into VersaWorks.

How do I request that a profile be made?
Can't find the profile you're looking for? Simply click on [this link](#) and we'll let the manufacturer know that you're in need of a profile for that particular media.

I'm having a technical issue. Whom should I contact?
We recommend you review this [Troubleshooting Guide](#) to help diagnose your issue. If you're still having problems, please contact our [Product Support team](#). After entering your serial number, you will be given different options on how you would like to communicate with the support team.

My printer isn't listed in the search for profiles. Where are the profiles for my printer?
The Roland Profile Center only lists profiles for current and recently discontinued Roland printers. To see a list of current printers, please visit our [Roland Care webpage](#). If your printer is not listed then it's possible that it is not a current device or no profiles were created for that printer.

Will profiles for Roland branded media still be available in the VersaWorks updater?
Starting March 2015, profiles for Roland-branded media will only be available in the Roland Profile Center. Future Roland VersaWorks updates will not include any Roland-branded media profiles.

Does Roland offer a guarantee on the profiles for the media listed in the Roland Profile Center?
Most of the media profiles posted within the profile center will be supplied by media manufacturers other than Roland. Because Roland can only test, endorse and guarantee its own profiles, users are encouraged to test any profiles selected from the website before printing to ensure satisfaction. Roland will not warranty media other than Roland-branded media. For your convenience here is a [link](#) to review the Roland Profile Center's Terms of Use.